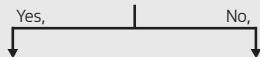


### How does it work for Customers?

- 1** Purchase a set of 4 Dynapro HP2 tyres plus a wheel alignment at a Hankook dealer.
- 2** Sign up to Mileage Warranty program.
- 3** Return to Hankook dealer for maintenance service every 10,000km or 6 months, whichever comes first.
- 4** If worn down to Tread Wear Indicator before delivering 80,000km within 5 years of purchase



Yes,  
Claim your credit towards a new set of tyres with the Service Booklet and invoices at any Hankook authorised dealer.

No,  
Enjoy the superior mileage, traction and safety by using Hankook tyres again.

### Credit Calculations

$$\text{Credit} = \frac{80,000 - \text{kilometres travelled}}{80,000} \times \text{Price}$$

In the rare case your Dynapro HP2 does not last 80,000km, a pro-rata credit will be provided using the formula above.

This means, if your Dynapro HP2 delivers 72,000km, you will receive a discount of 10% (8,000/80,000=10%) on your replacement tyres. If a set of 4 replacement tyres cost \$1,000, We will provide a credit of \$100 towards it.



### The sizes covered by the Mileage Warranty:

Inch	M CODE	Description	
15	1014152	215/70R15H	
	1014134	265/70R15H	
16	1014141	215/70R16H	
	1014139	225/70R16H	
	1014142	235/60R16H	
	1014586	245/70R16H XL	
	1014138	255/65R16H	
	1014998	265/70R16H	
17	1014151	225/60R17H	
	1014145	225/65R17H	
	1014585	245/65R17H XL	
	1014140	265/65R17H	
	1014143	275/65R17H	
	1014153	285/65R17H	
	1018526	225/55R18V	
18	1025930	225/60R18H	
	1014129	235/60R18V XL	
	1015263	235/65R18H	
	1014133	245/60R18H	
	1015264	255/55R18V XL	
	1015303	255/60R18V XL	
	1015266	265/60R18V	
	1015268	285/60R18V	
	19	1022030	225/55R19V
		1021561	235/45R19V
1015271		245/55R19H	
1015396		255/55R19V XL	
20	1015274	235/55R20H	
	1015275	245/50R20V	
	1015276	255/50R20V XL	
	1015277	265/50R20V	
	1015279	285/50R20V	



**Dynapro HP2**



## Service Schedule

Customer's name: \_\_\_\_\_

Dealer's name: \_\_\_\_\_

Invoice No.: \_\_\_\_\_ Date: \_\_\_\_\_

Tyre Size: \_\_\_\_\_ Odometer Reading: \_\_\_\_\_

Vehicle Registration Number: \_\_\_\_\_

### Terms and Conditions

To be eligible for the Mileage Warranty of Dynapro HP2,

1. Tyres in a set of 4 or more plus a wheel alignment must be purchased in a single transaction at a Hankook authorised dealer.
2. The size of the tyre must be included in the list of sizes covered by the Mileage Warranty program.
3. Dealers and customers must agree to the Terms and Conditions and sign on the signature space of the Service Booklet.
4. At the time of purchase, wheel balancing and alignment must be conducted.
5. The service must be conducted every 10,000 km or 6 months, whichever comes first, at a Hankook authorised dealer. Tyres must be rotated at every service, and the service must include visual inspection, checking for appropriate tyre pressure, wheel balancing and alignment, and receiving appropriate services when needed.
6. The original purchase invoice, wheel alignment invoices and Service Booklet should be retained for the whole period of mileage warranty program.
7. Replacement tyre refers to Dynapro HP2 or an equivalent Hankook tyre of our choice should Dynapro HP2 become unavailable.

Warranty is not transferable for a change of vehicle ownership, and expires after the warrantied kilometres or 5 years from the date of purchase, whichever comes first.

### Exclusions

This Warranty excludes the following:

1. Tyres which are unevenly worn down to the tread wear indicators.
2. Tyre sizes which are not qualified under the list of Mileage Warranty program.
3. Damages including but not limited to punctures, gutter damage, breaks/cuts from foreign object, vandalism, wilful damage or chemical degradation.
4. Wear caused by improper use, including but not limited to improper inflation, overloading, wheel imbalance, defective vehicle mechanical components, misalignment and off-road use.
5. Tyres used in commercial services, motorsport, competitive use and towing.
6. Tyres supplied as original equipment.
7. Any tyre that has not been repaired in accordance with the industry standards.

All four Dynapro HP2 tyres must be fitted to the same vehicle to be eligible. Liability and losses of a consequential nature are limited to the extent permitted by law.

I declare that I agree to the terms and conditions

Customer's signature \_\_\_\_\_

Store Manager's signature \_\_\_\_\_

Date: \_\_\_\_\_

Odometer: \_\_\_\_\_

Inflation       Rotation

Balance       Alignment

Dealer Stamp

Date: \_\_\_\_\_

Odometer: \_\_\_\_\_

Inflation       Rotation

Balance       Alignment

Dealer Stamp

Date: \_\_\_\_\_

Odometer: \_\_\_\_\_

Inflation       Rotation

Balance       Alignment

Dealer Stamp

Date: \_\_\_\_\_

Odometer: \_\_\_\_\_

Inflation       Rotation

Balance       Alignment

Dealer Stamp

Date: \_\_\_\_\_

Odometer: \_\_\_\_\_

Inflation       Rotation

Balance       Alignment

Dealer Stamp

Date: \_\_\_\_\_

Odometer: \_\_\_\_\_

Inflation       Rotation

Balance       Alignment

Dealer Stamp

Date: \_\_\_\_\_

Odometer: \_\_\_\_\_

Inflation       Rotation

Balance       Alignment

Dealer Stamp

Date: \_\_\_\_\_

Odometer: \_\_\_\_\_

Inflation       Rotation

Balance       Alignment

Dealer Stamp

Date: \_\_\_\_\_

Odometer: \_\_\_\_\_

Inflation       Rotation

Balance       Alignment

Dealer Stamp

Date: \_\_\_\_\_

Odometer: \_\_\_\_\_

Inflation       Rotation

Balance       Alignment

Dealer Stamp